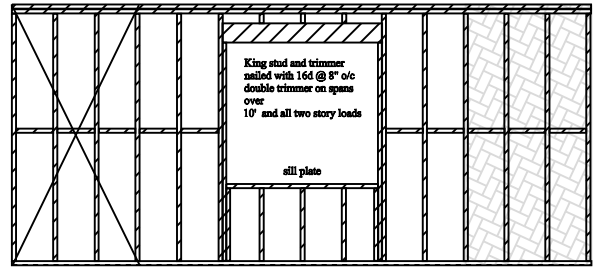


Proposed structure cannot be built over or under existing water, sewer lines or power lines without prior approval from the Building Division. No Gas piping shall be installed in or on the ground under any building or structure. the term "Building or Structure" shall include structures such as porches and steps, whether covered or uncovered, carports, covered walks, covered driveways, and covered walks, covered driveways, and similar structures or appurtenances.

**HEADER SIZES**

span in feet	single story loads	two story loads
0' < 4'	4" x 4"	4" x 6"
4' < 6'	4" x 6"	4" x 8"
6' < 8'	4" x 8"	4" x 10"
8' < 10'	4" x 10"	4" x 12"
10' < 12'	4" x 12"	4" x 14"
12' < 14'	4" x 14"	4" x 16"
14' < 16'	4" x 16"	6" x 12"



**Pressure Treated Plate Douglas Fir in all shear wall with 5/8" anchorage bolts @ 6' on center within 12" of splices a minimum of 2 per panel all with 2" x 2" x 3/16" square washers**

Braced wall lines shall consist of braced wall panels which meet the requirements for location, type and amount of bracing specified in Table 23-IV-C-1 and as in line or offset from each other by not more than 4 feet (1219 mm). Braced wall panels shall start at not more than 8 feet (2438 mm) from each end of a braced wall line. All braced wall panels shall be clearly indicated on the plans.

Construction of braced wall panels shall be by one of the following methods:

1. ~~Minimum 1 inch by 4 inch (25 mm by 102 mm) continuous diagonal braces let into top and bottom plates and intervening studs, placed at an angle not more than 60 degrees or less than 45 degrees from the horizontal, and attached to the framing in conformance with Table 23-IV-D-1. 1 is not permitted in Seismic Zones 2B, 3 and 4.~~
2. Wood boards of 1/2-inch (16 mm) net minimum thickness applied diagonally on studs spaced not over 24 inches (610 mm) on center.
3. Wood structural panel sheathing with a thickness not less than 5/16 inch (7.9 mm) for 16-inch (406 mm) stud spacing and not less than 3/8 inch (9.5 mm) for 24-inch (610 mm) stud spacing in accordance with Tables 23-IV-A-1 and 23-IV-D-1.
4. Fiberboard sheathing 4-foot by 8-foot (1219 mm by 2438 mm) panels not less than 1/2 inch (13 mm) thick applied vertically on studs spaced not over 16 inches (406 mm) on center when installed in accordance with Section 2315.6 and Table 23-B-7.
5. Gypsum board sheathing 1/2 inch (13 mm) thick by 4 feet (1219 mm) wide, wallboard or ceiling base) on studs spaced not over 24 inches (610 mm) on center and nailed at 7 inches (178 mm) on center with nails as required by Table 25-1.
6. Particleboard wall sheathing panels where installed in accordance with Table 23-IV-D-2.
7. Portland cement plaster on studs spaced 16 inches (406 mm) on center installed in accordance with Table 25-1.
8. Hardboard panel siding when installed in accordance with Section 2310.6 and Table 23-IV-C.

Method 1 is not permitted in Seismic Zones 2B, 3 and 4. For cripple wall bracing, see Section 2320.11.5.

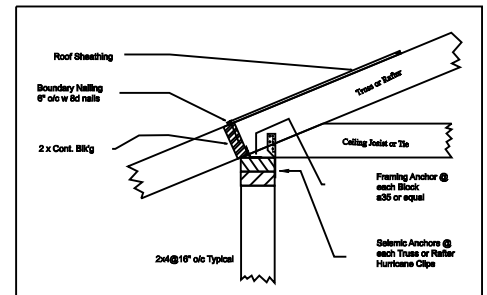
For Methods 2, 3, 4, 6, 7 and 8, each braced wall panel must be at least 48 inches (1219 mm) in length, covering three stud spaces where studs are 16 inches (406 mm) apart and covering two stud spaces where studs are spaced 24 inches (610 mm) apart.

For Method 5, each braced wall panel must be at least 96 inches (2438 mm) in length when applied to one face of a braced wall panel and 48 inches (1219 mm) when applied to both faces.

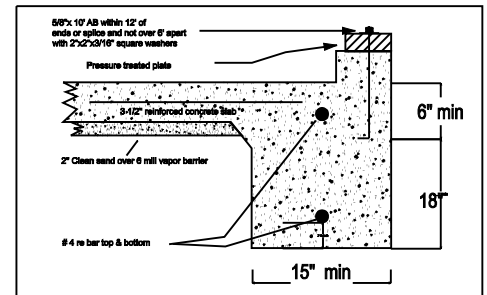
All vertical joints of panel sheathing shall occur over studs.

Horizontal joints shall occur over blocking equal in size to the studding except where waived by the installation requirements for the specific sheathing materials.

Braced wall panel sole plates shall be nailed to the floor framing and top plates shall be connected to the framing above in accordance with Table 23-IV-B-1. Sills shall be bolted to the foundation or slab in accordance with Section 1806.6. Where joints are perpendicular to braced wall lines above, blocking shall be provided under and in line with the braced wall panels.



**NOTE: Smoke detectors are required to be installed in ALL bedrooms, hallway / areas to bedrooms and vaulted area 24" or more higher that hallways.**



**Permanent Address numbers must be placed on building visible from street before final inspection. FRONT AND BACK BUILDING**